



Lebanon National Operations Room

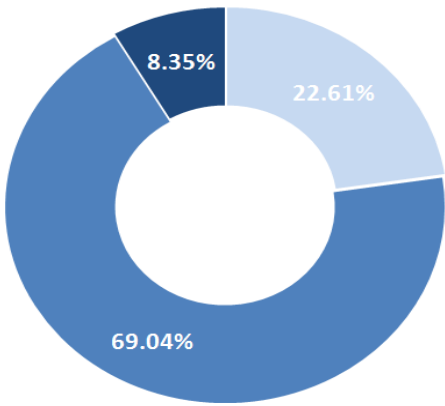
Daily Report on COVID-19

Sunday, April 19, 2020

Report #32

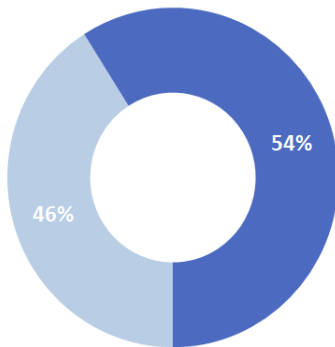
Time published: 16:00

Status of Cases



Asymptomatic Mild/Moderate Severe/Critical

Distribution of cases by gender (%)

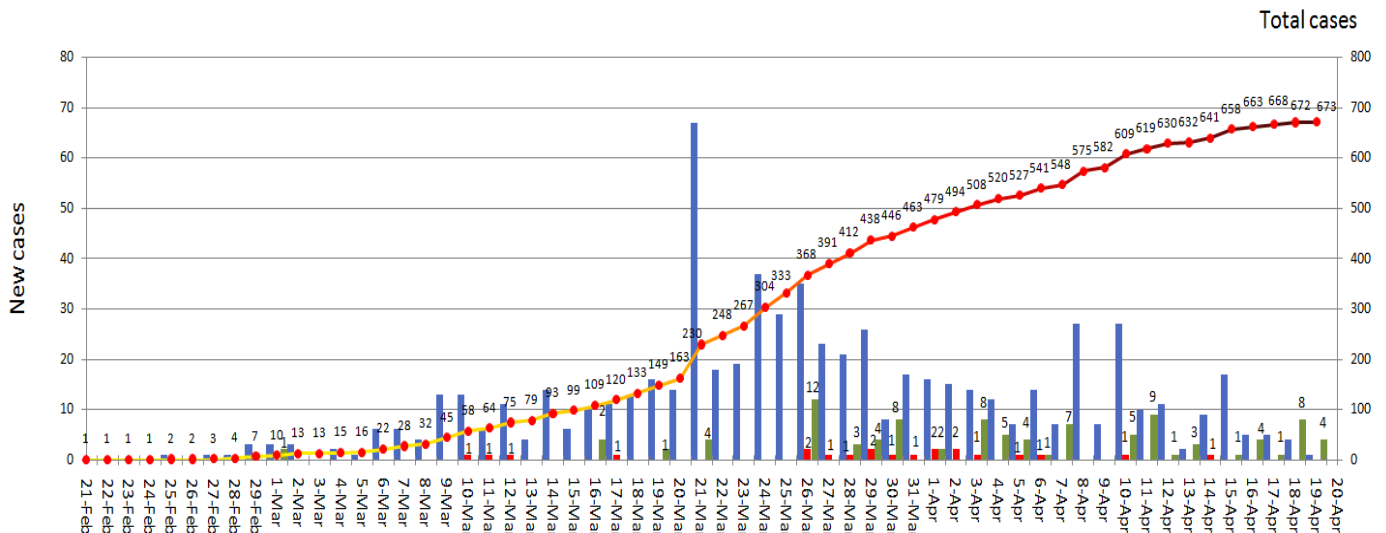


Female Male

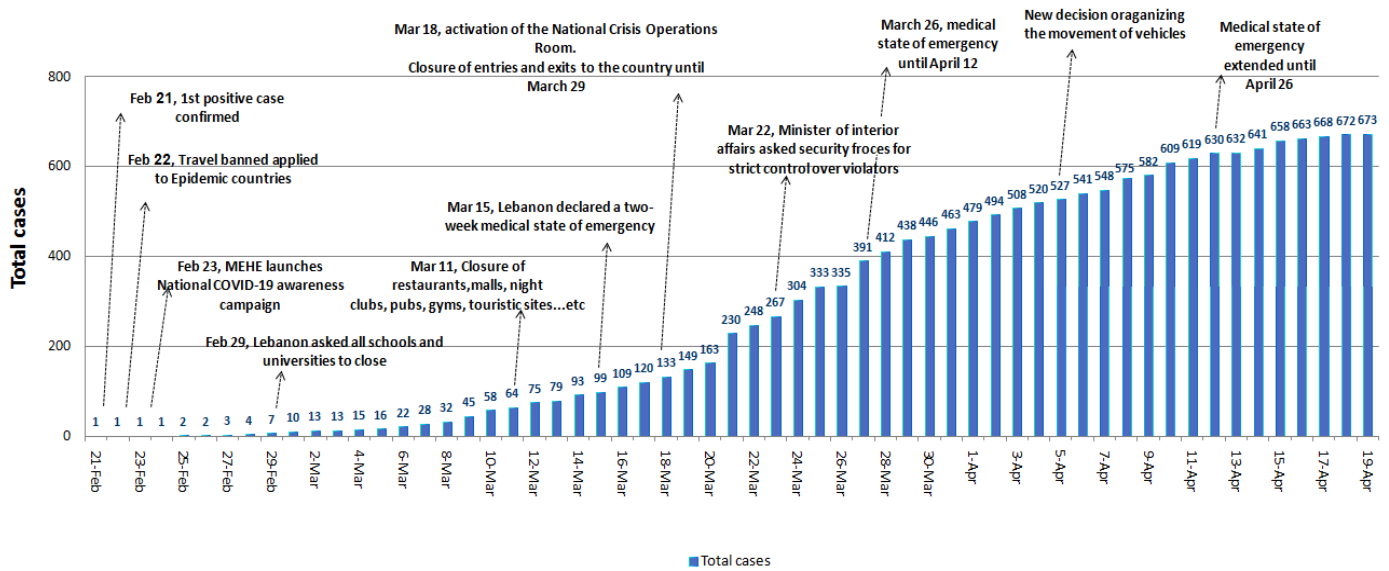
| | |
|--|----------------------------|
| Registered cases since Feb. 21 | 673 |
| Recoveries | 99 |
| Deaths | 21 |
| Current registered cases | 553 |
| New cases TOTAL=1 | 0 expatriates 1 locales |
| Conducted PCR tests since Feb. 21 | 18,743 |
| PCR tests conducted in the last 24 hrs. | 704 |
| PCR tests conducted in the airport since April 5 | 2,482 |
| PCR tests conducted in the airport in the last 24 hrs. | 0 |

Cases per Day

New cases Deaths Recovered Total cases

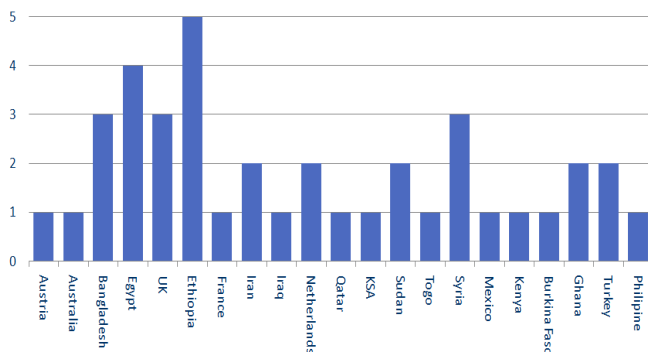


Chronology of decisions according to number of cases

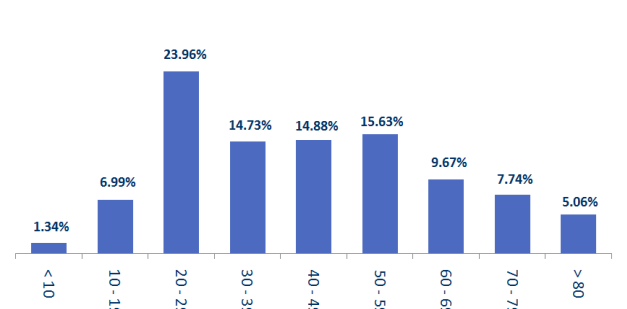


Distribution of cases by nationality

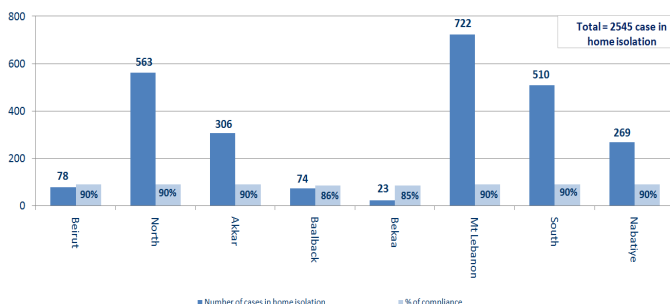
Lebanese: 634 cases out of 673 (94%)



Distribution of cases by age group (%)



Number of individuals in home isolation and percentage of commitment to isolation

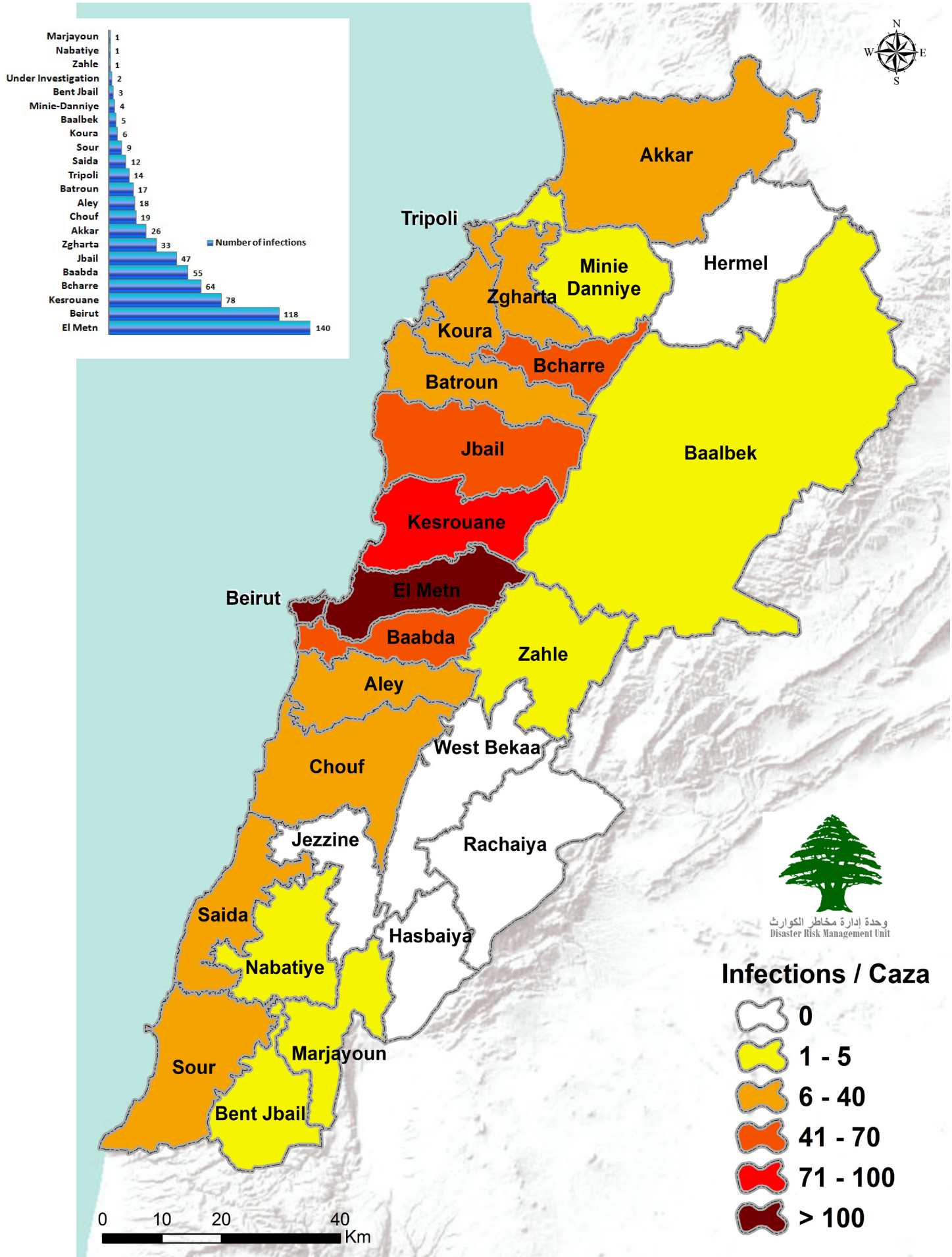


Location

Name of Laboratory

| | |
|-----------|----------------------------------|
| Beirut | Rafic Hariri University Hospital |
| Beirut | AUBMC |
| Beirut | HDF /Merieux / USJ |
| Beirut | Saint Georges Roum |
| Kesrouane | Bouar Governmental Hospital |
| Beirut | Rizk LAU |
| Byblos | Notre Dames de Secours |
| Baalbek | Baalbek Governmental Hospital |
| Tripoli | New Mazloum Hospital |
| Koura | Haykel Hospital |
| Metn | Hopital Dr. S. Serhal |
| Metn | Hospital of Bhannes |
| Beirut | Lebanese Hospital Geitaoui |
| Baabda | Mount Lebanon Hospital |
| Baabda | Saint George Hospital |
| Chouf | Ain Wazain Hospital |
| Sidon | Hammoud Hospital |
| Zahle | Elias Al Hrawi Hospital |

Number of Cases by Location

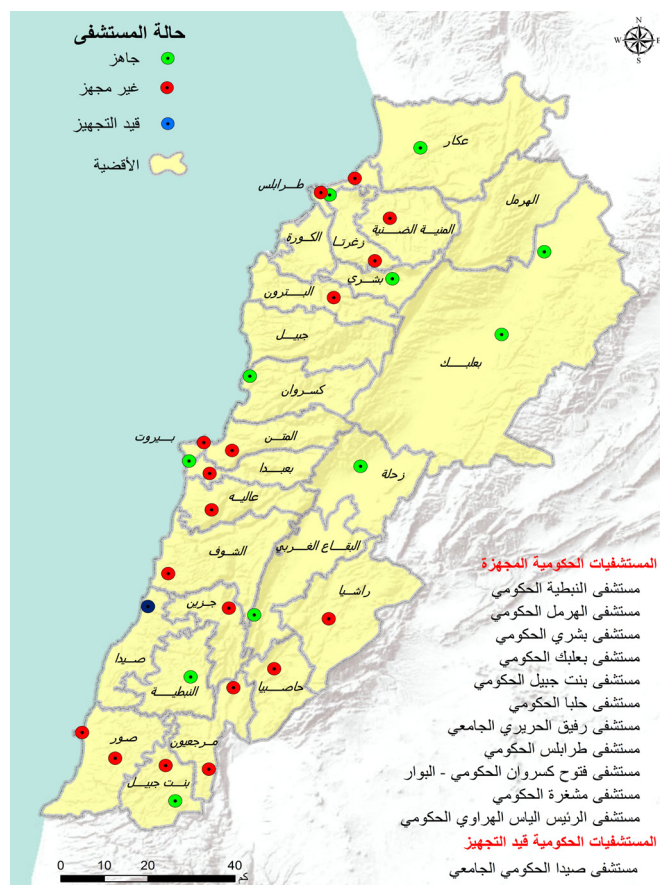


Level of Preparedness of Public and Private Hospitals



Status of private hospitals: AUBMC, Hotel Dieu Hospital, Jbeil Maounat Hospital, Al Roum Hospital

Green: Ready
 Yellow: District



Status of public hospitals
 Green: Ready - Blue: Will be ready in a week
 Red: Not ready - Yellow: District
 Public hospitals ready: RHUH, Baalbek Governmental Hospital, Bouar Governmental Hospital, Halba Governmental Hospital, Bshareh Governmental Hospital, Tipoli Governmental Hospital, Bint Jbeil Governmental Hospital, Mashghara governmental Hospital, Nabatieh Governmental Hospital, Hermel Governmental Hospital, Al Hrawi Hospital, Fattouh Hospital.
 In process of becoming ready: Saida hospital

Actions Taken at the Governorate and Municipal Level

Isolation centers approved by The Committee for the Follow up on Coronavirus Preventive Measures and Procedures Friday, April 10, 2020

The committee responsible for specifying potential isolation centers includes an officer from the General Secretariat of the Supreme Council of Defense, a medical doctor in the army, an engineer from the army, and a representative from the Order of Nurses in Lebanon.

The committee aims to inspect possible isolation centers in coordination with the concerned governorates and municipalities.

| Governorate | Number of isolation centers |
|---------------|-----------------------------|
| Mount Lebanon | 16 |
| North | 2 |
| South | 4 |
| Akkar | 11 |
| Bekaa | 10 |
| Total | 43 |

| Governorate | Level of commitment to the decision to close all businesses | Sectors violating closure decision |
|----------------|---|--|
| Beirut | 90% | Commercial stores, violating the car mobility decision |
| North | 80% | Commercial stores, violating the car mobility decision, gatherings |
| Akkar | 90% | Vegetable markets, commercial stores, violating the car mobility decision |
| Baalbek-Hermel | 80% | Cafes, Commercial stores, violating the car mobility decision, traffic, farmers' gathering, gatherings, weddings |
| Bekaa | 9% | Commercial stores, farmers' gatherings |
| Mount Lebanon | 90% | Commercial stores, violating the car mobility decision. |
| South | 90% | Gatherings, violating the car mobility decision. |
| Nabatieh | 90% | Commercial stores, violating the car mobility decision. |

Ministry of Public Health

- Issued a daily report on new cases and the status of existing cases in government and private hospitals.
- Implemented the health measures agreed upon within the Lebanese government's plan to return Lebanese expatriates during flights and at the airport, and defined the required isolation procedures according to the health status of expatriates in coordination with the Committee for the Follow up on Coronavirus Preventive Measures and Procedures, the Ministry of Foreign Affairs, the Ministry of Public Works and Transport, the General Directorate of Public Security and Middle East Airlines.
- Continues to equip government hospitals and others.
- Field examination of the hospitals and laboratories designated by the ministry to deal with the emerging coronavirus.
- Following up on the health situation of expatriates who have returned to Lebanon.
- Conducting and following up on conducted PCR tests for citizens in various Lebanese regions.
- The Ministry of Public Health has started increasing the number of PCR examinations and distributing medical supplies to government hospitals as part of its plan that focuses on random sampling every day in various Lebanese regions, which will allow to define the epidemic stage and take appropriate decisions.
- Received medical assistance from other countries to increase the capacity of hospitals and medical personnel.
- Announced the readiness of Elias Al Hrawi Governmental Hospital in Zahle for testing for the coronavirus, after providing it with the necessary medical equipment and equipment.
- Receive medical assistance from countries to increase the capacity of hospitals and medical personnel.

Lebanese Red Cross

- 789 new suspected cases were transferred to hospitals (14 new cases)
- 1,170 trained paramedics (41 new)
- 53,126 number of those benefiting from awareness sessions
- 36 trained ambulance centers
- 11 additional ambulance centers ready to respond when needed
- 454 PCR tests transported to laboratories (13 new)

Ministry of Foreign Affairs

- The ministry was informed that several expatriated donated money to governmental hospitals and the medical staff.
- The Ministry is following up with the Lebanese missions and consulates to organize the nominal regulations for expatriate students with limited financial capabilities who will be provided with financial assistance.
- Based on the decision of the Ministerial Committee for the Return of Expatriates, the Ministry of Foreign Affairs, and in coordination with the ministries and other relevant authorities, the ministry will follow up to determine the countries that will be included in the second stage of the plan to return Lebanese Expats after April 26, 2020 and prepare the regulation.
- Note:
Website for Lebanese expatriates who wish to return to Lebanon: <https://mfa.gov.lb/arabic/return-to-lebanon>
Website for student expatriates: <https://mfa.gov.lb/arabic/students-abroad>

Security services (Internal Security Forces, General Security, State Security, Army, General Directorate of Civil Defense)

- The Lebanese army and other security services implemented strict measures on all Lebanese territory to ensure public mobilization.
- The army closed 225 shops, dispersed 21 public gatherings. The army also supported a number of municipalities in implementing precautionary measures. The army also shared the names of the 147 blocked roads by the municipalities.
- General Security Forces followed up on the airport's set regulations for the return of Lebanese expatriates to their homeland and tracked potential cases in various Lebanese regions and ensured that they're adhering to the terms of home isolation. In addition, they dispersed several gatherings and aided several municipalities in issuing several written warnings to institutions and individuals that did not adhere to the decisions of the Council of Ministers.
- ISF issued 813 written warnings, of which 472 directed at cars that violated the decision of the Ministry of Interior and Municipalities, 51 warnings were directed at institutions and 290 were directed at individuals who violated the decisions of the Council of Ministers. ISF has so far issued 14,764 written warnings since March 21.
- The General Directorate of Civil Defense carried out 5 transportation missions for dialysis patients to hospitals based on the Minister of Interior and Municipalities Decision No. 479/2020. It also prepared 72 personnel and 16 ambulances, to interfere, when necessary, and transport those infected with the emerging coronavirus. It also trained 300 members to transport infected individuals. The directorate also carried out sterilization missions in public and private areas that were excluded from the decision to close.
- State Security Forces visited different Lebanese regions and closed a number of shops. They also issued 12 written warnings. The forces also dispersed a number of public gatherings.

Ministry of Interior and Municipalities

- The ministry is following up on the issued Decree No. 479 on April 5, 2020, stating the new regulation allowing the mobilization of cars and trucks on specific days of the week according to their number plates.
- Following up on the implementation of the decision to extend the state of public mobilization until 12/4/2020 in accordance with Cabinet Resolution No. 1 dated 3/26/2020.
- The Ministry issued a circular No. 45/ 2020 on 19/4/2020 regarding the amendment of circular No. 40/2020 related to the operating times of exempted institutions according to Cabinet decisions No. 53/2020 that was released on 3/24/2020 and circular No. 54/2020 released on 3/26/2020. the circular focused specifically on supermarkets and mini markets, dairy and cheese shops, vegetables and fruit markets, meat, fish and poultry stores, sweets and pastry shops, water providers, and restaurants. Their new operating hours are 5 am to 8 pm.

Ministry of Public Works

| Flight | Depart s to | Carrying | Departure time |
|-------------|----------------|----------------------|-------------------|
| Skylounge | Geneva | 5 | 15:00 |
| | | Internation als | |
| Flight | Arrives | carrying | Arrival time |
| Skylounge | abu Dhabi | 7 | 16:00 |
| | | Lebanese citizens | |
| cargo plane | UAE | Goods | 10:05 |
| Cargo plane | Qatar | goods | 20:25 |
| total | | | 3 |

| Port | entered | | | left | | |
|--------------|------------|-----------|----------|------------|-----------|----------|
| | Import | Direction | # | export | Direction | # |
| Beirut | containers | Egypt | 1 | containers | Turkey | 1 |
| | containers | Syria | 1 | | | |
| Chekka | Chemicals | Turkey | 1 | | | |
| Tripoli | | | | empty | Turkey | 1 |
| Total | | | 3 | | | 2 |

Notes:

- The airport: All arrivals through Rafic Hariri International Airport are subject to health and security measures approved in the plan for the return of Lebanese expatriates by the Ministry of Public Health, the General Directorate of General Security and the General Directorate of Civil Aviation.
- Ports: Before allowing any vessel to enter the campus's harbor, the entire crew of the vessel is examined by a device approved by the Ministry of Public Health to ensure that there are no infections.

Objectives of the National Operations Room

The National Operations Room works on coordinating efforts in order to accomplish the following goals:

- First Objective: Control the spread of the virus through the application of precautionary measures, minimize direct contact among people, and increase awareness of the population and access to information.
- Second Objective: Ensure the continuity of services at the national level and adopt and encourage remote working.
- Third Objective: Increase health sector capacity by continuously assessing available resources, gaps and look for funding and technical assistance to build up capacities and case management.

General Directions and Recommendations

- Implement the decisions issued by the Presidency of the Council of Ministers at the level of public and private institutions and municipalities.
- Stay at home and don't go out unless it is necessary.
- Frequently wash hands and follow all safety measures set by the Ministry of Public Health.
- Avoid crowded places and social contact and commit to a safe distance between individuals.
- Seek medical care if you feel fever, cough and difficulty of breathes. Call the Ministry of Public Health hotline 1214 or 01-594459

Risks that Might Result in the Rapid Spread of the Virus

- Lack of adherence to the medical advisories.
- Disrespecting to compulsory home quarantine.
- The spread of the virus in crowded places.
- Allowing gatherings to take place